

Simplified, Smart Control

# New AlorAir-R APP WI-FI Connection Guide

Connecting the AlorAir-R app to the dehumidifier is the same for iOS and Android users.

—ALORAIR—

NEW



Download and install [AlorAir-R](#) from the App Store or Google Play Store.

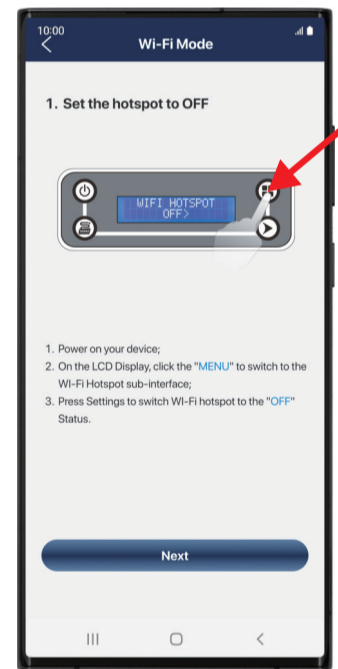
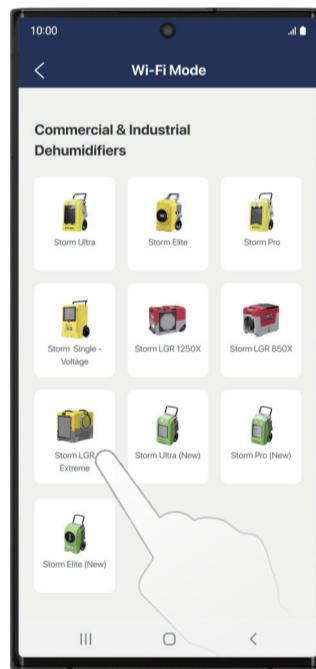
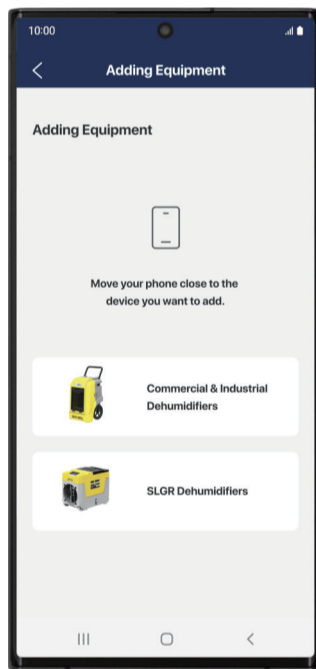
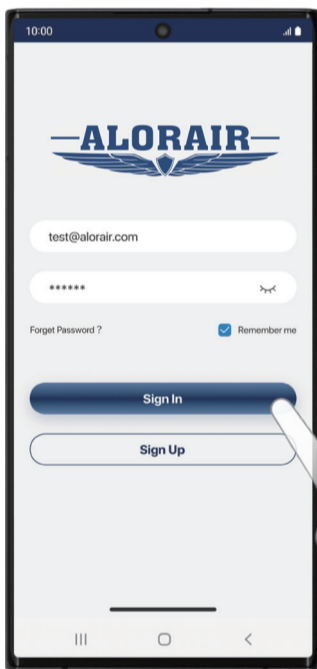


## How It Works?

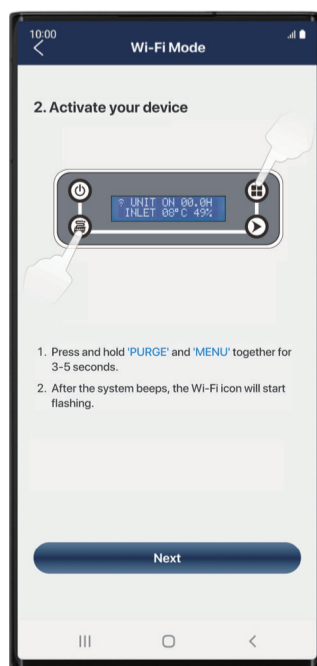
**1** Sign up and login your account.

**2** Find your dehumidifier model.  
Let's take [Storm LGR Extreme](#) as an example.

**3** Follow the steps on the App to Switch the Hotspot to OFF.

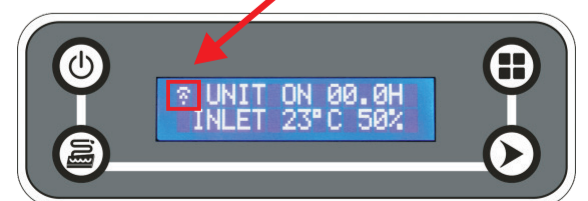
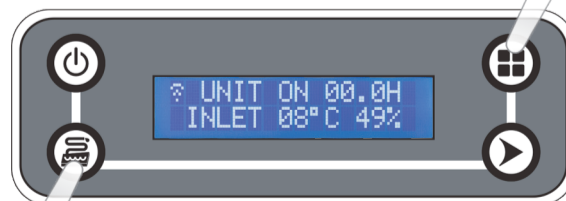


**4** Follow these App steps to activate your device.

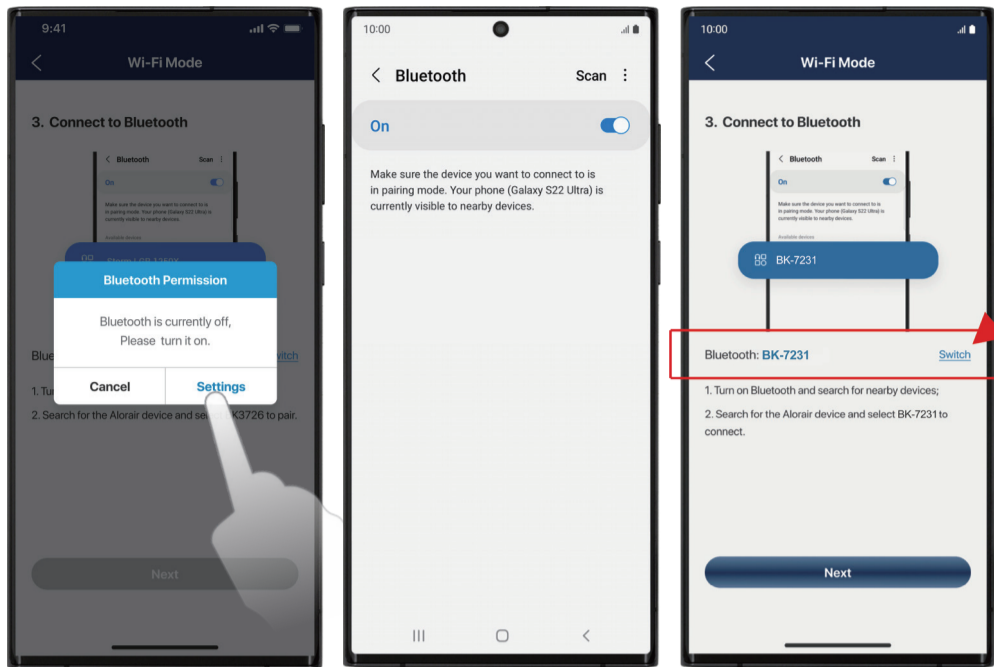


Press and hold 'PURGE' and 'MENU' together for 3-5 seconds.

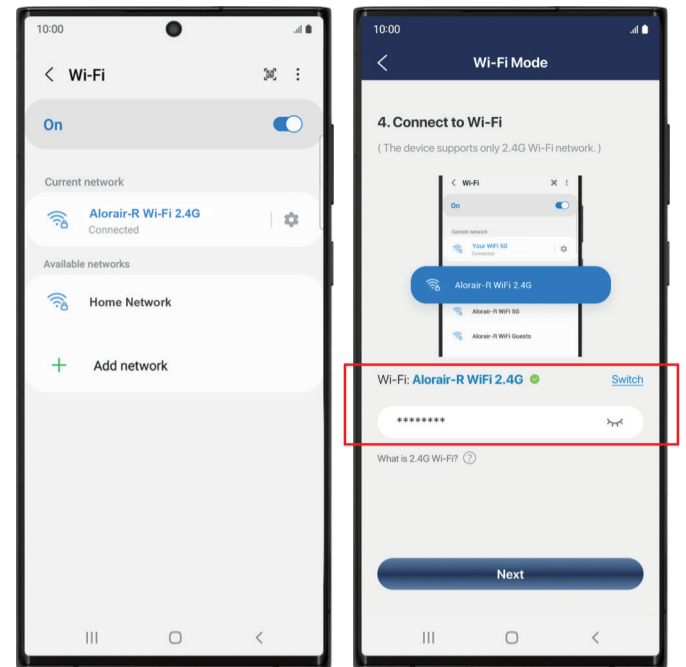
After the system beeps, the Wi-Fi icon will start flashing.



**5** Turn on your phone's Bluetooth, return to the app, tap the **SWITCH** button and select the Bluetooth name ( **BK-7231**) to connect.

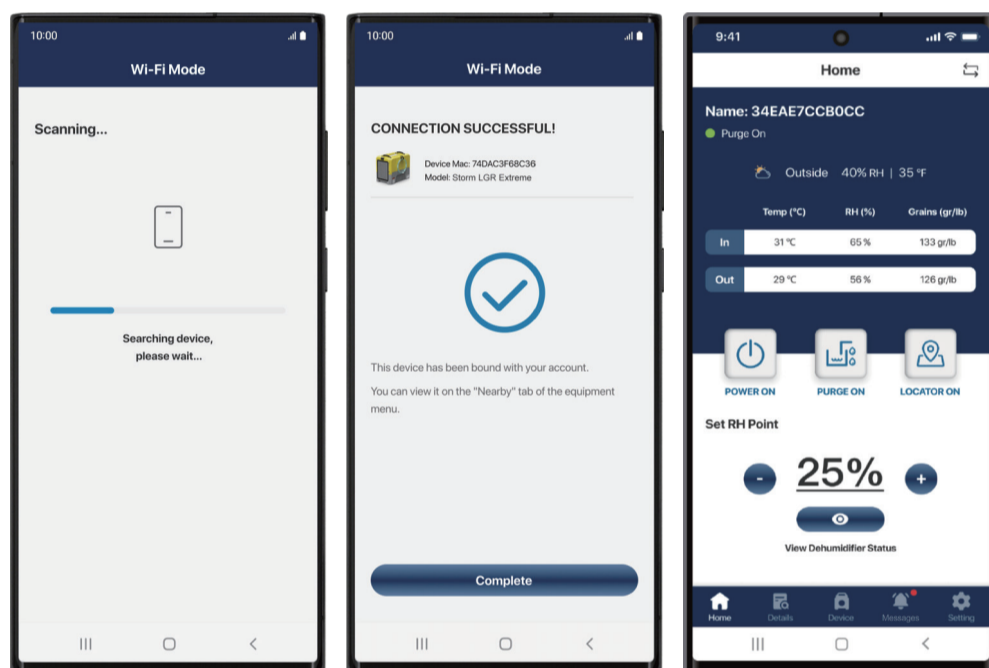


**6** Connect to the home Wi-Fi. Wrong password will cause subsequent connection failure.



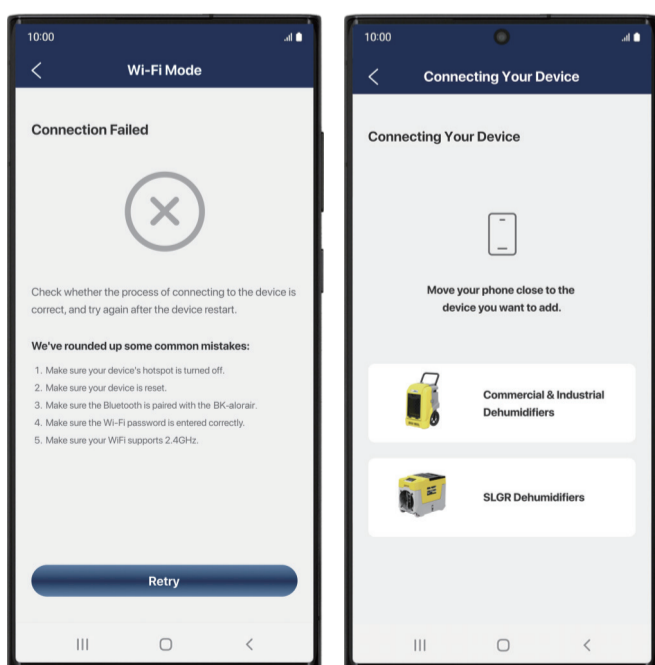
✓ CONNECTION SUCCESSFUL!

Once the app has successfully connected to the device, you can start controlling the device.



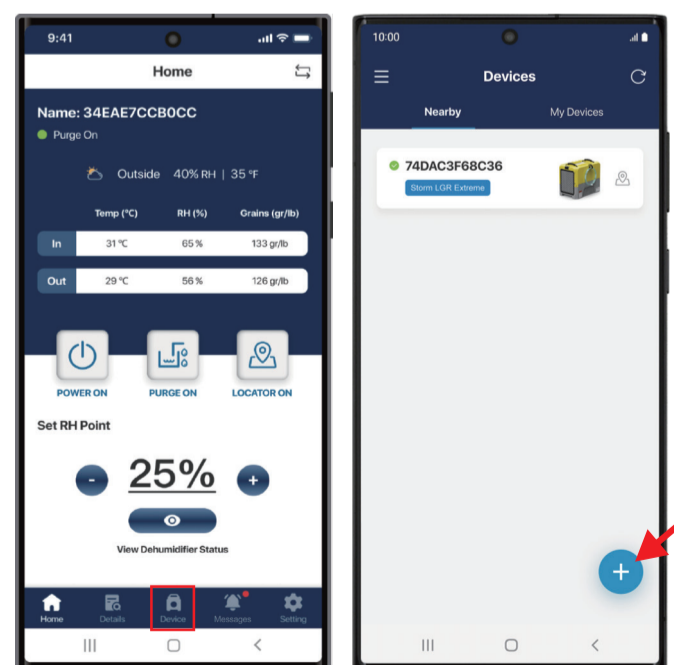
✗ Connection Failure

If connection fails, follow the app's troubleshooting prompts and restart your device before retrying.



+ Add New Device

To add a new device, navigate to the 'Device' tab and tap the '+' button.



For the best user experience, we recommend placing your Wi-Fi router close to your dehumidifier. If your Wi-Fi signal is weak, consider a router with stronger coverage. A stable signal ensures your dehumidifier runs smoothly.

